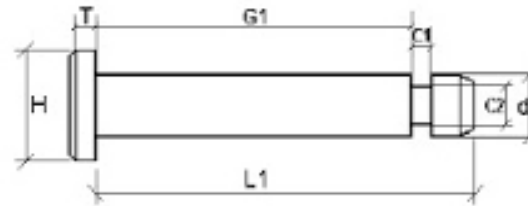


ISO 2341 Clevis Pin With Circlip Groove



ISO 2341 Clevis Pin With Circlip Groove						
Nominal Diameter-d	5	6	8	10	12	14
Diameter Tolerance	h11					
Head Diameter-H	8	10	14	18	20	22
Hole Diameter-d1	1.6	1.6	2	3.2	3.2	4
Head Thickness-T	1.6	2	3	4	4	4
Circlip Groove-C1	0.7	0.8	0.9	1.1	1.1	1.1
Circlip Groove-C2	4.8	5.7	7.6	9.6	11.5	13.4
Length-G1	SEE PIN DRAWING REQUEST PAGE					
Lengths-L1	10 To 50	12 To 60	16 To 80	20 To 100	24 To 120	28 To 140
Length Tolerances	Up To 10m/m L/g + / - 0.25		12 - 50m/m L/g + / - 0.50		Over 50m/m L/g + / - 0.75	

Material	
Mild Steel	Zinc Plated
Stainless Steel	A2
Stainless Steel	A4

INFORMATION AND DRAWINGS PROVIDED ARE FOR REFERENCE ONLY